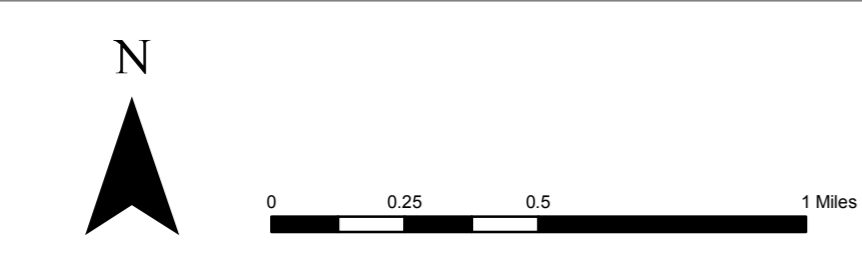


Start at Bayou Segnette State Park, 7777 Westbank Expressway Westwego, LA 70094
Left turn on Segnette Blvd, cross Lapalco. (becomes Nicole Blvd), travel 2.5 miles
Turn right on Jamie Drive (2nd stop sign), travel 1 mile
Turn right on US 90, travel 1.6 miles
Rest Stop - Roadside Park, on right hand side
Travel over US 90 Bridge
Turn right on Nine Mile Point Road West, travel 0.2 miles
Turn right on Nine Mile Point Road, travel 1 mile (use caution crossing at the unsignalized 2 track rail crossing)
Turn right on Westbank Expressway and make a U-turn at first crossover, travel 1.2 miles
Turn right on Segenette Blvd., travel 0.8 miles to the back of Bayou Segnette State Park
Short Ride Ends
Travel through park to front entrance
Turn right on Westbank Expressway, travel 0.7 miles
Turn right at Tanglewood Drive, travel 0.6 miles
Turn left on to Lapalco Blvd., travel 2.4 miles
Turn right on Ames Blvd., travel 1.5 miles
Turn right on Barataria Blvd. (LA 45)
Rest stop - 1/2 block on right- Estelle Elementary
Continue on Barataria Blvd for 5.5 miles
Rest Stop - Jean Lafitte National Park Visitor Center Barataria Preserve Unit
Continue on Barataria Blvd for 1.1 miles
Turn right on LA 3134 (Leo Kerner/Lafitte Parkway), travel 0.3 miles
Turn right onto LA 301, travel 0.6 miles
Turn right to stay on LA 301, travel 2.8 miles to La. Tour Company
Cross Bayou by boat to Fleming Hardware
Head east on Fleming Park Road
Turn right on Jean Lafitte Blvd. (LA 45), travel 0.5 miles
Turn left on City Park Dr.
Rest Stop - Jean Lafitte Pavillion
Turn right on Jean Lafitte Blvd. (LA 45), travel 3.5 miles
Turn right onto LA 3134 (Leo Kerner/Lafitte Parkway), travel 2.3 miles
Turn left on Barataria Blvd. (LA 45), travel 6.7 miles
Turn left on Ames Blvd, travel 1.4 miles
Turn left on Lapalco Blvd., travel 3.6 miles
Turn right on Segnette Blvd, travel 1./ block
Turn right into Bayou Segnette State Park
Ride Ends



**Tour de Jefferson
Official Route**

